

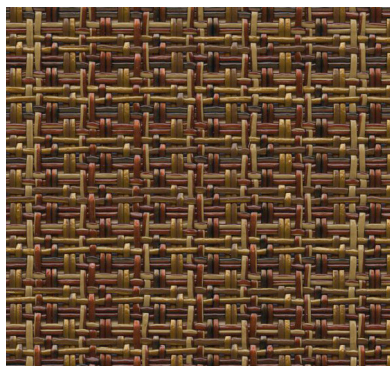
Phifertex®

BY PHIFER

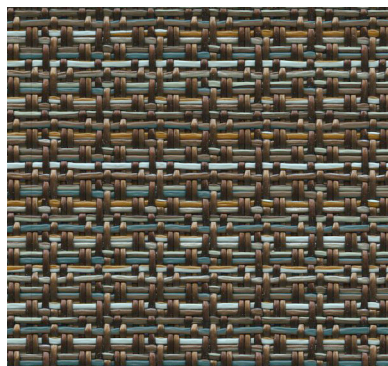


Wicker Weaves
Slingable Fabrics

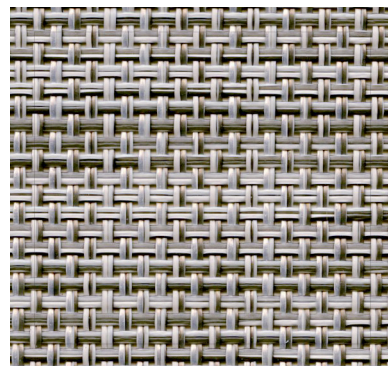




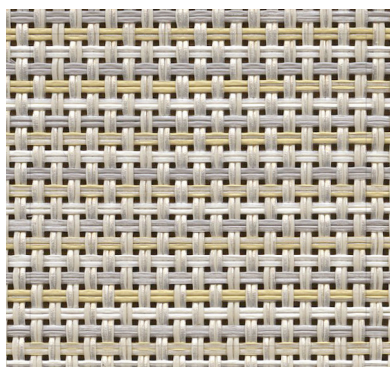
Terrace Sienna | KP4
 3025671 | Construction: 22x22



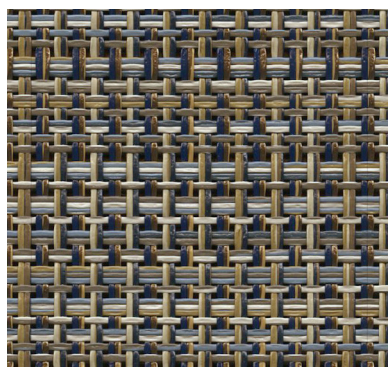
Terrace Malachite | LFR
 3036913 | Construction: 22x22



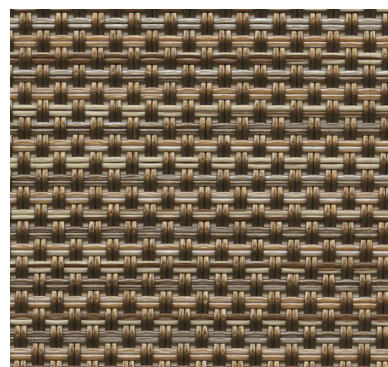
Creel Birch | ZEN
 3040731 | Construction: 22x22



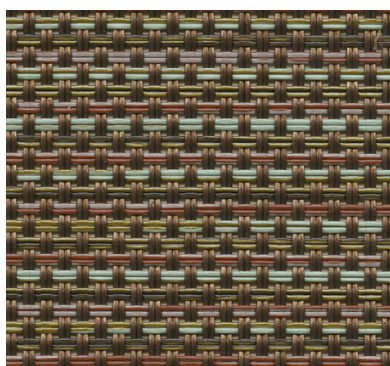
Watercolor Tweed Oyster | 0GA
 3028985 | Construction: 22x22



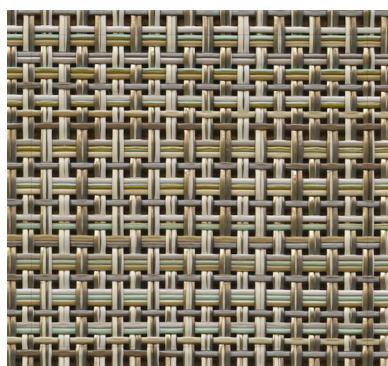
Shelby Cadet Blue | LDY
 3035584 | Construction: 22x22



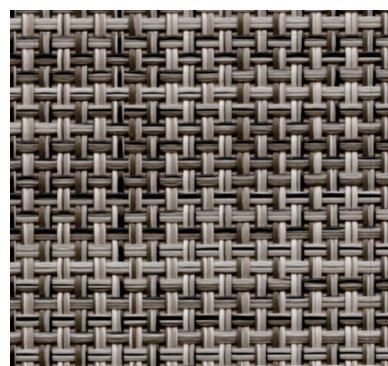
Watercolor Tweed Mocha | EX8
 3028986 | Construction: 22x22



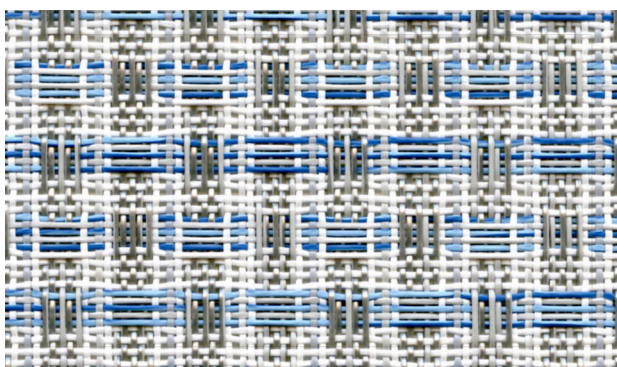
Watercolor Tweed Moth | EX7
 3028984 | Construction: 22x22



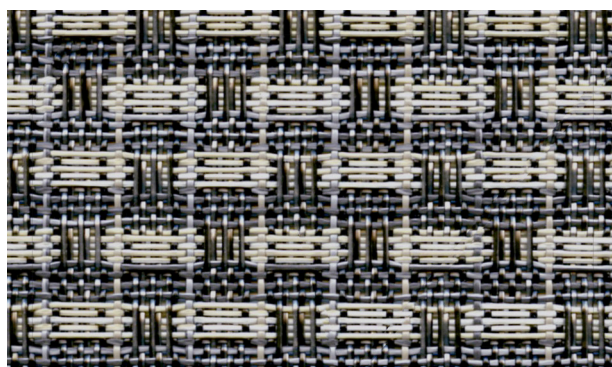
Tiki Glow | NG7
 3032496 | Construction: 22x20



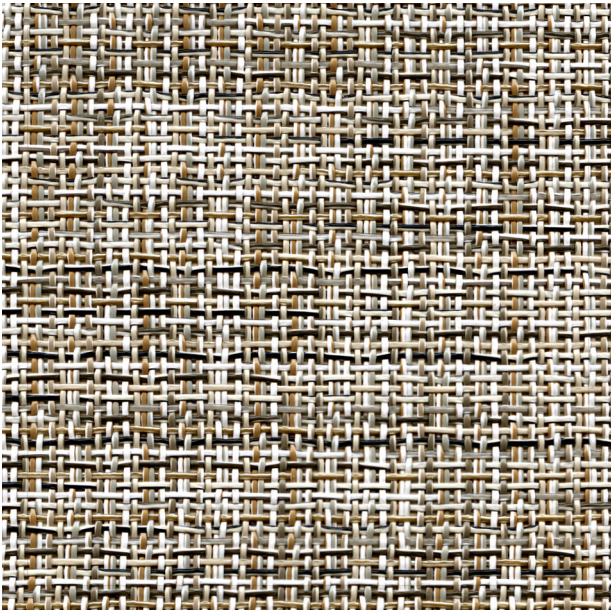
Creel Driftwood | ZHT
 3044356 | Construction: 22x22



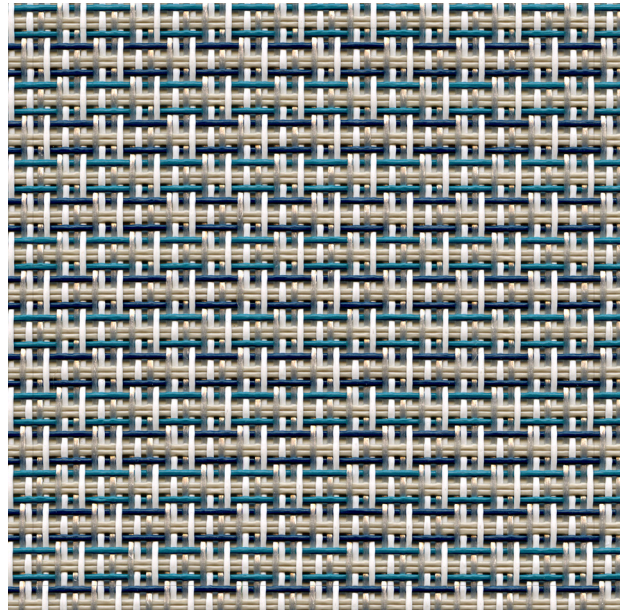
Burke Riviera | LLN
 3042908 | Construction: 22x22



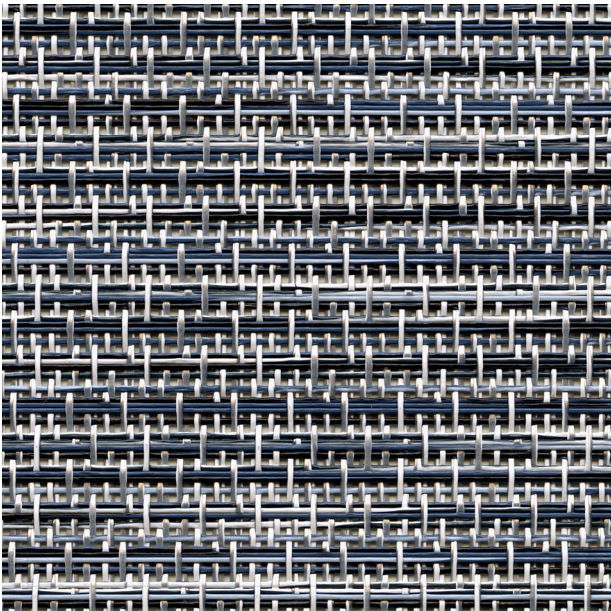
Burke Topaz | NDG
 3042909 | Construction: 22x22



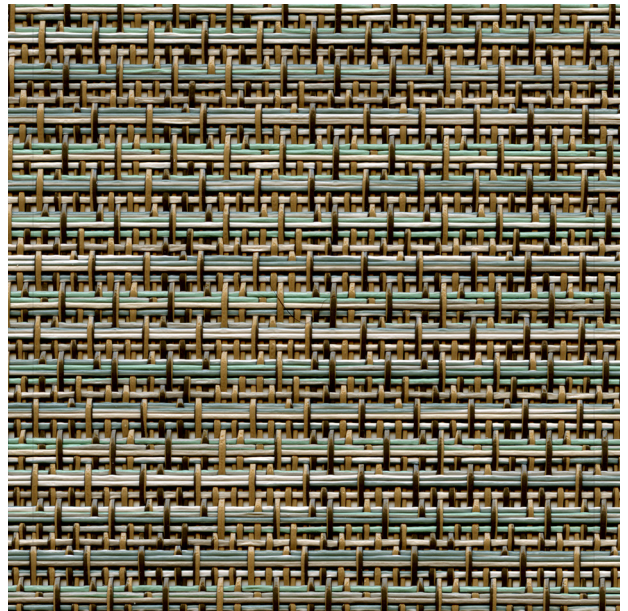
NEW | Marche Cashmere | NHR
3047330 | Construction: 22x18



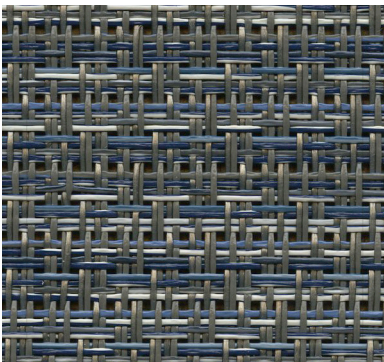
NEW | Lanai Caribbean | LPW
3047339 | Construction: 22x20



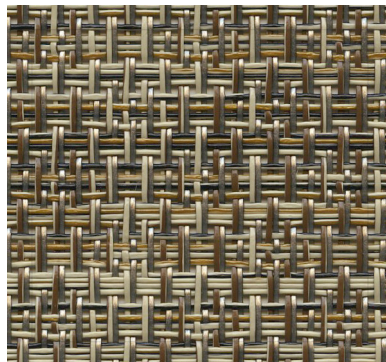
NEW | Caratao Blueprint | LPC
3047350 | Construction: 22x22



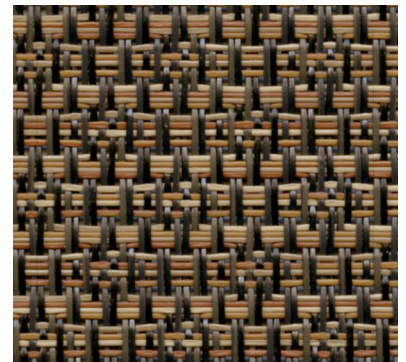
NEW | Caratao Harbor | LPD
3047351 | Construction: 22x22



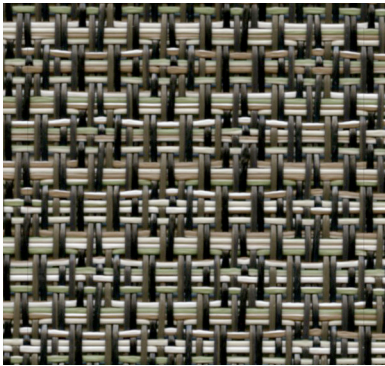
Free Spirit Denim | LHQ
3038263 | Construction: 22x22



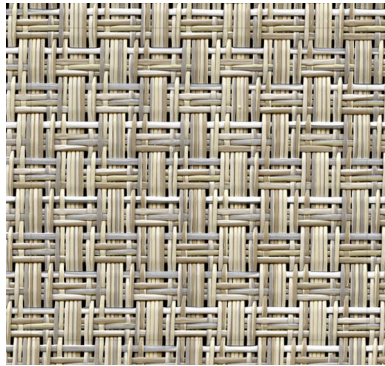
Napa Brindle | ET2
3027662 | Construction: 22x22



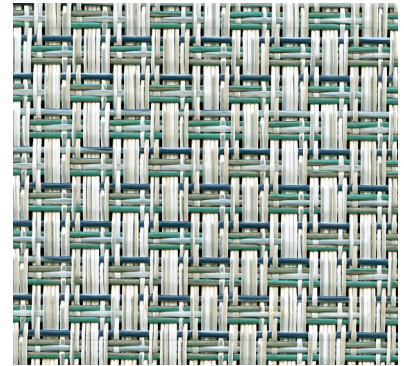
Napa Tawny | KEF
3044354 | Construction: 22x22



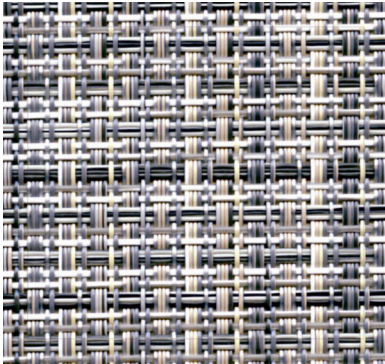
Napa Fern | DDW
3044355 | Construction: 22x22



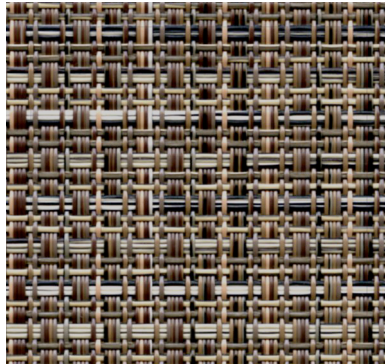
Interlock Linen | NBE
3039320 | Construction: 42x20



Interlock Calypso | DCW
3039312 | Construction: 42x20



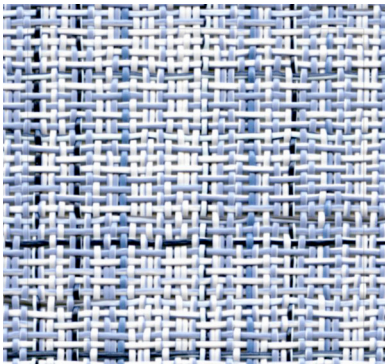
Gannon Granite | ZGE
3042910 | Construction: 37x22



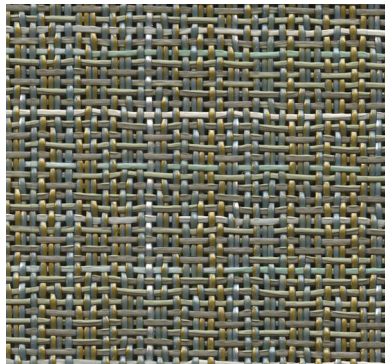
Gannon Mocha | NDH
3042911 | Construction: 37x22



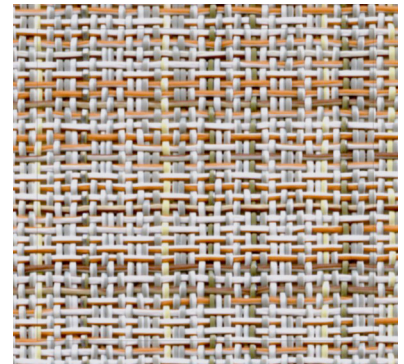
Gannon Birch | NEM
3044369 | Construction: 37x22



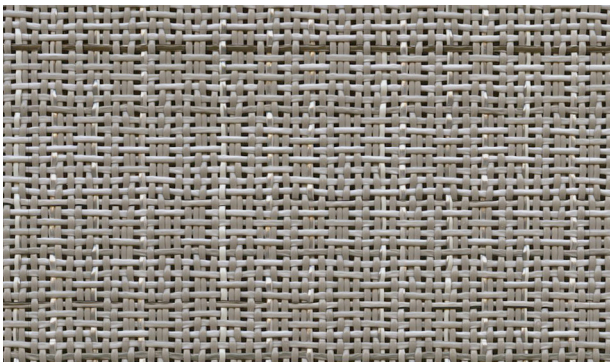
Charm Ice Blue | LLQ
3042905 | Construction: 22x18



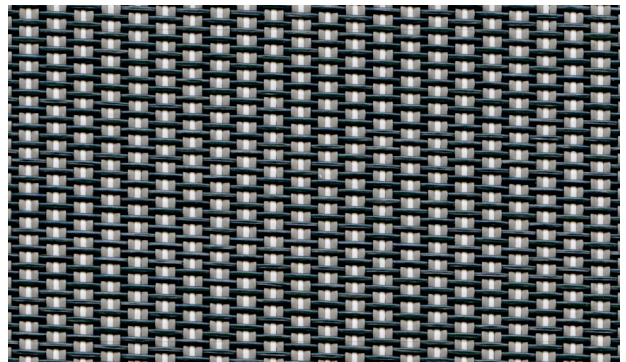
Charm Blue Haven | LED
3035583 | Construction: 22x18



Charm Tango | KDV
3042907 | Construction: 22x18



Charm Platinum | YHK
3036916 | Construction: 22x18



Nova Slate | LKR
3040730 | Construction: 22x22



FABRIC FEATURES

DURABILITY/CLEANABILITY

Functional and durable, Phifertex fabrics offer excellent performance while withstanding spills, splatters and the hustle and bustle of high traffic areas. These fabrics are easy to maintain – easily cleaned with soap and water or 50/50 bleach to water solution.

WARRANTY

Phifer offers a 3-year limited warranty for Phifertex Outdoor Fabrics. This warranty covers the fabric becoming non-functional due to loss of dimensional stability from exposure to conditions including sunlight, mildew, rot and normal atmospheric conditions. The warranty does not cover damage to the fabric from any source nor does it cover gradual fading or discoloration from atmospheric pollution or other debris. This warranty remains in effect for 3 years from the date of purchase. Phifer will provide new fabric, free of charge, to replace the non-functioning fabric. This warranty does not cover the cost of labor or other consequential or incidental expenses.



GREENGUARD

GREENGUARD Certification ensures products have met some of the world's most rigorous and comprehensive standards for low emissions of volatile organic compounds (VOCs) into indoor air. Phifer was the first manufacturer in the outdoor fabric industry to achieve GREENGUARD certification. Certification is completely voluntary and ensures that the highest industry standards are being applied to maintain indoor air quality for the health and safety of building occupants.



MICROBAN®

Phifertex fabrics are the only outdoor furniture fabrics in the world to include Microban protection. Microban antimicrobial protection works continuously to inhibit the growth of bacteria, mold and mildew that can cause stains, odors and product deterioration.



- Microban antimicrobial protection is infused into Phifertex fabrics for lasting protection that won't wash off or wear away for the lifetime of the product.
- Phifertex fabrics infused with Microban antimicrobial technology are ideal for any commercial or residential environment where microbes are a concern, including healthcare, hospitality, home, office, schools and institutions.

FLAME RETARDANCE

- National Fire Protection Association, NFPA No. 101, "Life Safety Code", Class "A" rating. (Tested in accordance to ASTM E84, Surface Burning Characteristics of Building Material.) 17x11 (ASTM E84-16), 25x25 (ASTM E84-15b), 37x15 (ASTM E84-16), Plus (ASTM E84-15b).
- International Building Code (IBC), Section 803.1.1, Class "A" rating (Tested in accordance to ASTM E84).
- Upholstered Furniture Action Council Fabric Classification Test Method 1990 (UFAC) - Class "I" Rating.
- Federal Motor Vehicles Safety Standards, Section 571.302, Standard Number 302 (FMVSS 302), Flammability of Interior Materials.
- California Technical Bulletin 117-2013, Section 1, Cover Fabric Test.



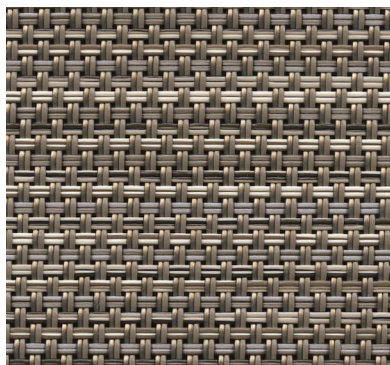
Phifertex®

BY PHIFER

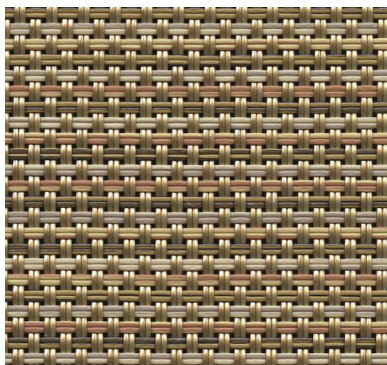


Wicker Weaves
Slingable Fabrics

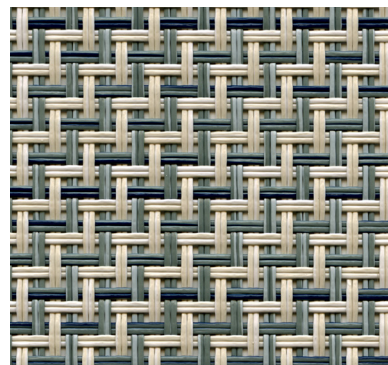




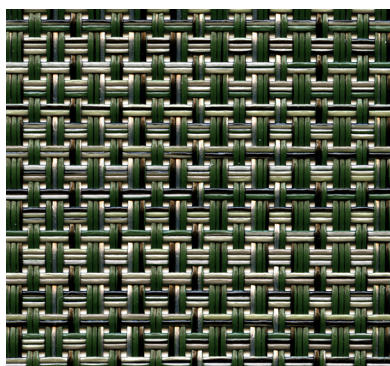
Watercolor Tweed Pearly | NG8
3032497 | Construction: 25x25



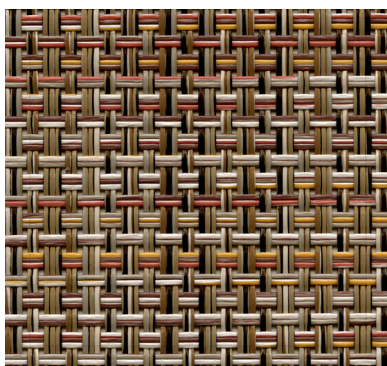
Watercolor Tweed Glow | NG5
3032494 | Construction: 25x25



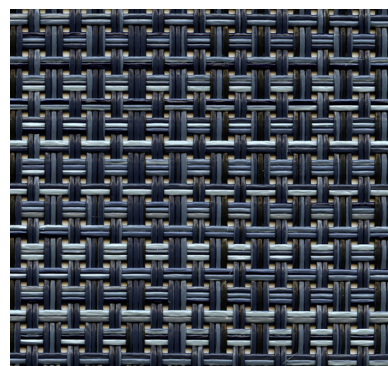
NEW | Kipton Dark Teal | DES
3047340 | Construction: 25x25



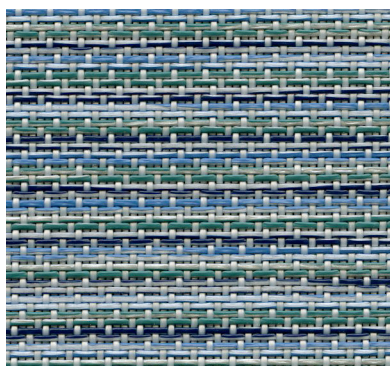
NEW | Windsor Meadow | DET
3047349 | Construction: 25x25



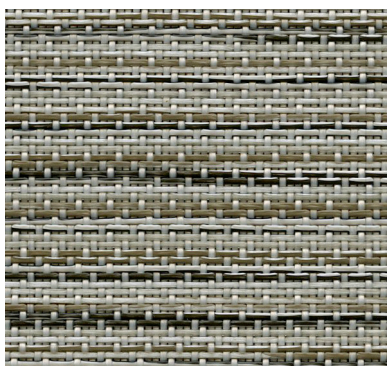
NEW | Windsor Apricot | KFG
3047348 | Construction: 25x25



NEW | Windsor Battleplan | LPV
3047347 | Construction: 25x25



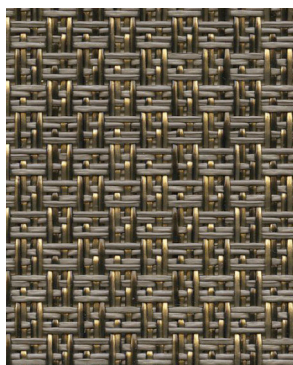
Kozo Jewel | LIW
3039316 | Construction: 25x25



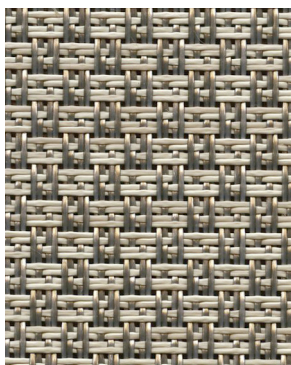
Kozo Fossil | ZBY
3039322 | Construction: 25x25



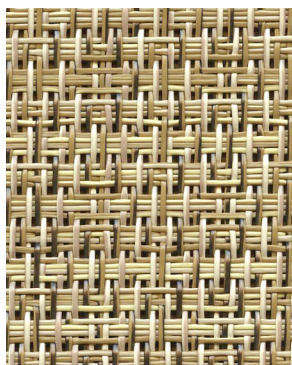
Kozo Abalone | OJX
3039309 | Construction: 25x25



Sisal Tungsten | AK0
3007292 | Construction: 25x25



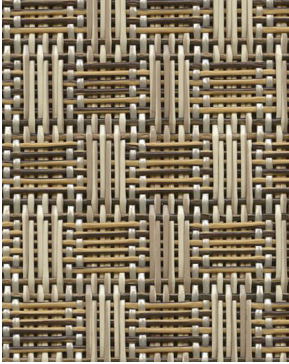
Sisal Aluminum | 00V
3009605 | Construction: 25x25



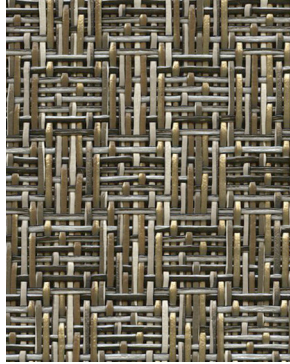
Echo Valley-Sadat | EH6
3024085 | Construction: 25x25



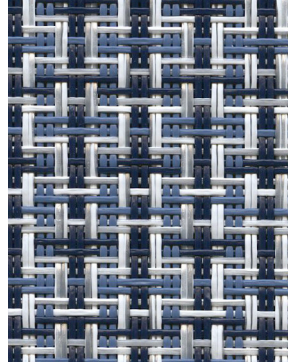
Double Dipper | BT3
3018411 | Construction: 25x25



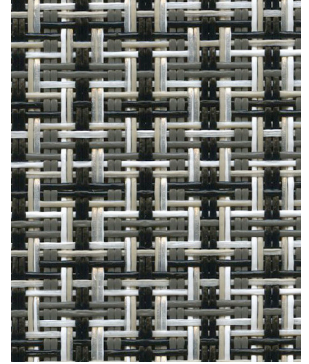
Wicker Veranda-Nutmeg | EM9
3025672 | Construction: 25x20



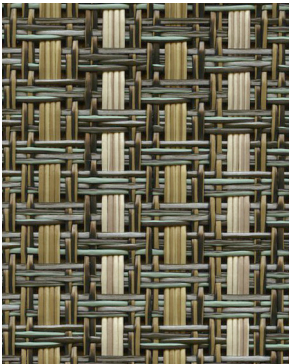
Kamali Limestone | XZY
3029024 | Construction: 25x20



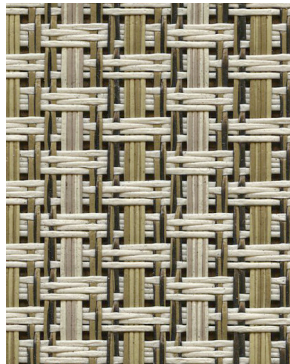
Jazzy Twilight | LHP
3038260 | Construction: 25x20



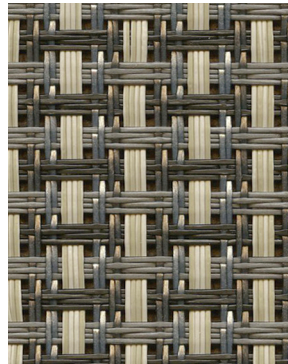
Jazzy Raven | ZAZ
3038261 | Construction: 25x20



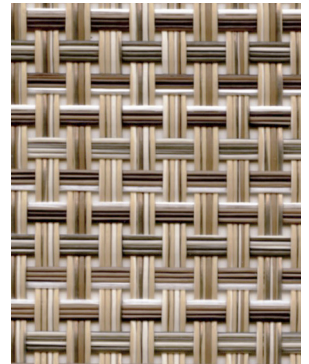
Turquesa | DB1
3013955 | Construction: 25x25



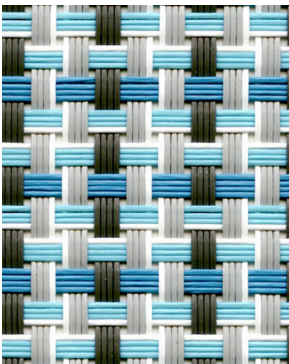
Natural | AB8
3013957 | Construction: 25x25



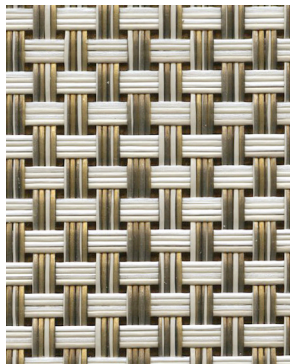
Plata | XFG
3016021 | Construction: 25x25



Blazer Pecan | NEL
3044359 | Construction: 25x25



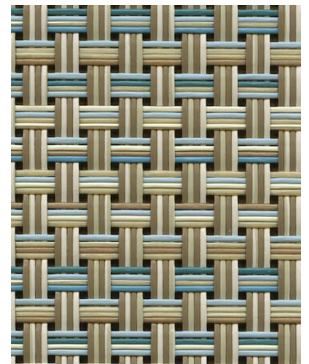
Blazer Surf | LKS
3040733 | Construction: 25x25



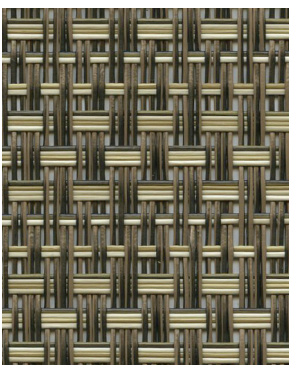
Cane Oyster | OFE
3027664 | Construction: 25x25



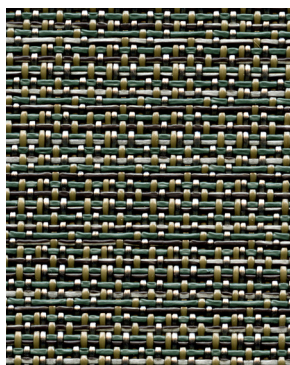
Cane Wicker Desert | AD7
3007253 | Construction: 25x25



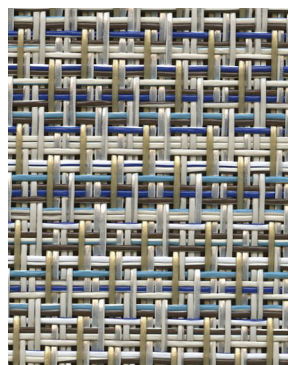
Cane Weave Pacific | LFQ
3036910 | Construction: 25x25



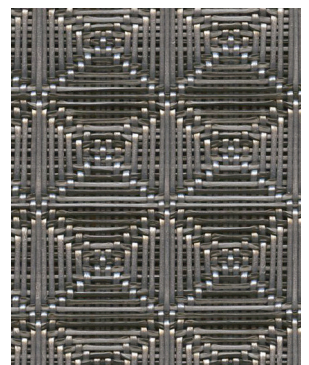
Montego | NG3
3032492 | Construction: 25x20



NEW | Satin Glassblock | DER
3047346 | Construction: 25x25



Caribbean Cane | LHT
3038264 | Construction: 25x25



Braque Graphite | YHJ
3036915 | Construction: 25x25



FABRIC FEATURES

DURABILITY/CLEANABILITY

Functional and durable, Phifertex fabrics offer excellent performance while withstanding spills, splatters and the hustle and bustle of high traffic areas. These fabrics are easy to maintain – easily cleaned with soap and water or 50/50 bleach to water solution.

WARRANTY

Phifer offers a 3-year limited warranty for Phifertex Outdoor Fabrics. This warranty covers the fabric becoming non-functional due to loss of dimensional stability from exposure to conditions including sunlight, mildew, rot and normal atmospheric conditions. The warranty does not cover damage to the fabric from any source nor does it cover gradual fading or discoloration from atmospheric pollution or other debris. This warranty remains in effect for 3 years from the date of purchase. Phifer will provide new fabric, free of charge, to replace the non-functioning fabric. This warranty does not cover the cost of labor or other consequential or incidental expenses.



GREENGUARD

GREENGUARD Certification ensures products have met some of the world's most rigorous and comprehensive standards for low emissions of volatile organic compounds (VOCs) into indoor air. Phifer was the first manufacturer in the outdoor fabric industry to achieve GREENGUARD certification. Certification is completely voluntary and ensures that the highest industry standards are being applied to maintain indoor air quality for the health and safety of building occupants.



MICROBAN®

Phifertex fabrics are the only outdoor furniture fabrics in the world to include Microban protection. Microban antimicrobial protection works continuously to inhibit the growth of bacteria, mold and mildew that can cause stains, odors and product deterioration.



- Microban antimicrobial protection is infused into Phifertex fabrics for lasting protection that won't wash off or wear away for the lifetime of the product.
- Phifertex fabrics infused with Microban antimicrobial technology are ideal for any commercial or residential environment where microbes are a concern, including healthcare, hospitality, home, office, schools and institutions.

FLAME RETARDANCE

- National Fire Protection Association, NFPA No. 101, "Life Safety Code", Class "A" rating. (Tested in accordance to ASTM E84, Surface Burning Characteristics of Building Material.) 17x11 (ASTM E84-16), 25x25 (ASTM E84-15b), 37x15 (ASTM E84-16), Plus (ASTM E84-15b).
- International Building Code (IBC), Section 803.1.1, Class "A" rating (Tested in accordance to ASTM E84).
- Upholstered Furniture Action Council Fabric Classification Test Method 1990 (UFAC) - Class "I" Rating.
- Federal Motor Vehicles Safety Standards, Section 571.302, Standard Number 302 (FMVSS 302), Flammability of Interior Materials.
- California Technical Bulletin 117-2013, Section 1, Cover Fabric Test.

